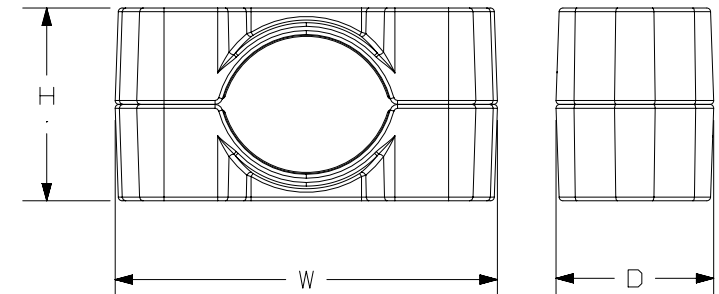
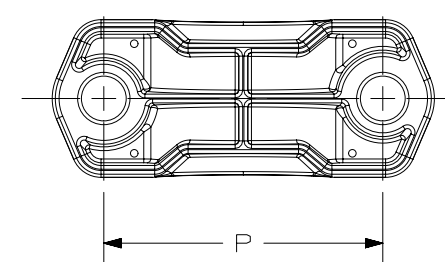
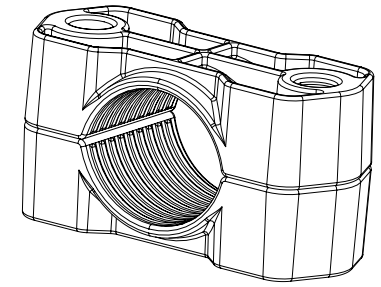


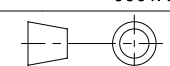
THIS COPY IS PROVIDED ON A RESTRICTED BASIS AND IS NOT TO BE USED IN ANY WAY DETRIMENTAL TO THE INTERESTS OF PANDUIT CORP.

| PART NUMBER | CABLE DIAMETER RANGE in. [mm] | "H" in. [mm] | "W" in. [mm] | "D" in. [mm] | "P" in. [mm] | WEIGHT lb [g] | MOUNTING HOLES |
|----------------|------------------------------------|-------------------|-------------------|-------------------|-------------------|--------------------|----------------|
| CCAL2H3846-X | 1.50-1.81 [38-46] | 2.01 [51] | 3.98 [101] | 1.65 [42] | 2.91 [74] | 0.43 [197] | 2 × M10 |
| CCAL2H4658-X | 1.81-2.28 [46-58] | 2.36 [60] | 4.53 [115] | 1.69 [43] | 3.40 [86] | 0.56 [254] | 2 × M10 |
| CCAL2H5870-X | 2.28-2.76 [58-70] | 2.87 [73] | 5.04 [128] | 1.73 [44] | 3.89 [99] | 0.69 [316] | 2 × M10 |
| CCAL2H7083-X | 2.76-3.27 [70-83] | 3.39 [86] | 5.55 [141] | 1.81 [46] | 4.41 [112] | 0.85 [386] | 2 × M10 |
| CCAL2H8397-X | 3.27-3.82 [83-97] | 3.94 [100] | 6.22 [158] | 1.85 [47] | 5.00 [127] | 1.08 [489] | 2 × M10 |
| CCAL2H97109-X | 3.82-4.29 [97-109] | 4.53 [115] | 6.73 [171] | 1.93 [49] | 5.49 [140] | 1.28 [583] | 2 × M10 |
| CCAL2H109120-X | 4.29-4.72 [109-120] | 5.04 [128] | 7.20 [183] | 1.97 [50] | 5.93 [151] | 1.48 [672] | 2 × M10 |



NOTES:

- VISIT OUR ON-LINE CATALOG AT WWW.PANDUIT.COM FOR A LIST OF CURRENT PARTS APPLICABLE FOR USE WITH THIS PRODUCT.
- DIMENSIONS IN () ARE METRIC.
- ALL MATERIALS AND COMPONENTS USED MEET THE MATERIAL RESTRICTIONS OF RoHS (EUROPEAN DIRECTIVE ON THE RESTRICTION OF HAZARDOUS SUBSTANCES) AS PROPOSED BY THE RoHS TECHNICAL ADAPTATION COMMITTEE.
- CASTINGS ARE ALUMINUM.
- MEETS IEC 61914:2015 SPECIFICATIONS.
- MOUNTING FASTENERS AND INSULATING MATERIALS ARE NOT INCLUDED IN THE PACKAGE AND MUST BE PURCHASED SEPARATELY.
- SELECT M10 BOLT LENGTH SUITABLE FOR THE RUNG.
- CONTACT PANDUIT SALES FOR CUSTOMIZED SOLUTIONS.

| | | | | | | | | | | | |
|---|--|--|------------------------|--|--|-----------------------------|--|--|-------------|--|--|
| TITLE | | | | | | ALUMINUM 2-HOLE CABLE CLEAT | | | | | |
| CUSTOMER DRAWING | | | | | | | | | | | |
| ITEM REVISION NAME | | | 00017EAU/00 | | | DRAWING NUMBER | | | 00017EAU_DC | | |
| DATASET FILE NAME | | | 00017EAU_DC/00A | | | MATERIAL | | | ALUMINUM | | |
|  | | | THIRD ANGLE PROJECTION | | | DRAWN BY | | | KEC | | |
| DATE | | | 08/02/18 | | | CHK | | | BBEA | | |
| SCALE | | | 1:2 | | | SHEET 1 OF 1 | | | A | | |

| | | | | | | |
|-----|----------|-----|------|-----|-------------|--------|
| 00A | 03/13/19 | KEC | BBEA | GBI | RELEASED | 041917 |
| REV | DATE | BY | CHK | APR | DESCRIPTION | ECN |