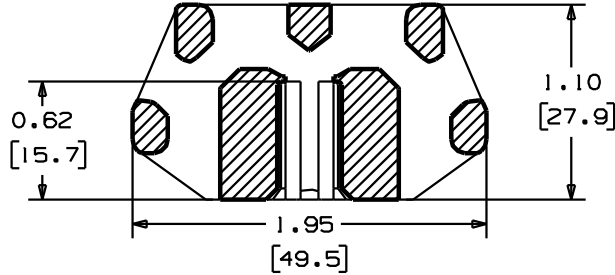
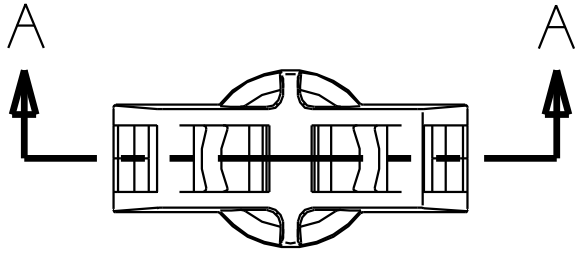
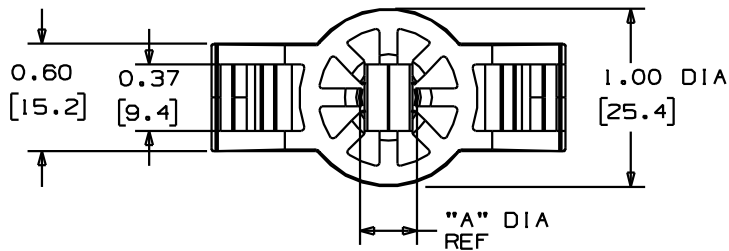


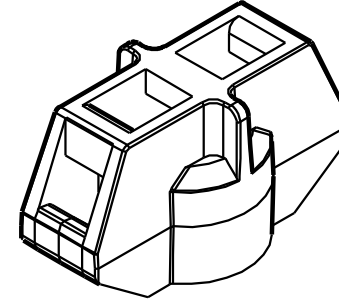
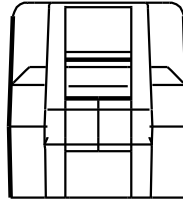
THIS COPY IS PROVIDED ON A RESTRICTED BASIS AND IS NOT TO BE USED IN ANY WAY DETRIMENTAL TO THE INTERESTS OF PANDUIT CORP.



SECTION A - A



PANDUIT PART NUMBER*	RECOMMENDED MOUNT STUD	MINIMUM INSTALLED STUD PROTRUSION	DIMENSION "A" REF	WEIGHT lbs/100 pcs (g)/100 pcs	FOR USE WITH THE FOLLOWING PANDUIT CABLE TIES
TMSTHS10	3/8" DIA M10	0.050 (12.7)	0.344 (8.7)	2.67 (1210)	MINIATURE INTERMEDIATE STANDARD LIGHT HEAVY HEAVY
TMSTHS11	7/16" DIA		.387 (9.8)	2.64 (1200)	
TMSTHS12	M12		0.433 (11.0)	2.60 (1180)	
TMSTHS13	1/2" DIA		0.476 (12.1)	2.54 (1150)	
TMSTHS16	5/8" DIA M16		0.610 (15.5)	2.39 (1090)	
TMSTHS19	3/4" DIA		0.727 (18.5)	2.31 (1050)	



*NOTES:

- SEE www.panduit.com FOR PART NUMBER SUFFIX DESIGNATION CONCERNING PACKAGE SIZE, PART MATERIAL AND PART COLOR.

DIMENSIONS IN BRACKETS ARE METRIC [mm]

TITLE TMSTHS TIE MOUNT FOR THREADED STUD		CUSTOMER DRAWING	
ITEM REVISION NAME G03597CS/03		PANDUIT	
DATASET FILE NAME G03597CS_DC_GB0239CY/10			
UNLESS OTHERWISE SPECIFIED, DIMENSIONAL TOLERANCES ARE: IN [mm]		MATERIAL: NYLON 6/6	
.x : 0.05 [1.3] .xxx : 0.010 [0.25]		DRAWING NUMBER: GB0239CY	
.xx : 0.02 [0.5] ANGLES : 5°		THIRD ANGLE PROJECTION	
DRAWN BY MLT	DATE 1/12/96	CHK	SCALE 1:1
DESCRIPTION REVISED OAL DIMENSION SEE ECN FOR FULL DETAILS.		ECN GB0239CY/10	SIZE A

D101000A/16

REV	DATE	BY	CHK	APR	DESCRIPTION	ECN
10	10/29/13	BWG	MPH	RTF	REVISED OAL DIMENSION SEE ECN FOR FULL DETAILS.	GB0239CY/10