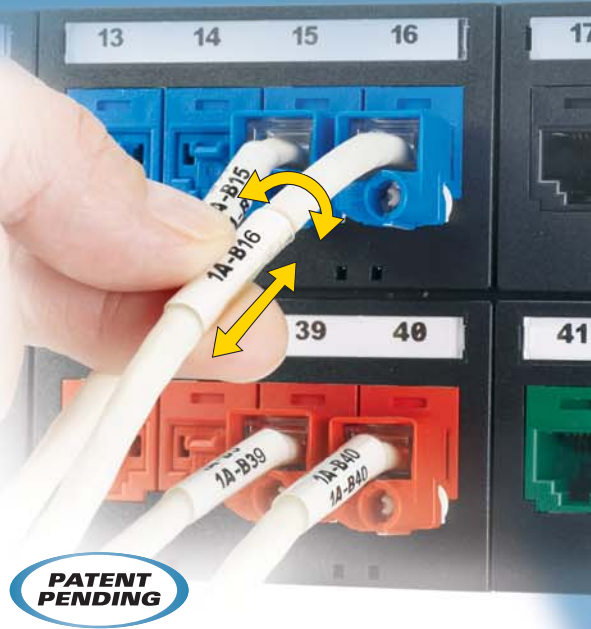


NEW! Turn-Tell™ Labels

Panduit innovative Turn-Tell™ Labels provide a unique identification solution to meet the application needs of data centers, industrial automation, and other structured cabling infrastructures. These new pressure-sensitive, self-laminating labels improve visibility, placement, aesthetics, and flexibility of the labeling application. The labels are unique because they can rotate on the wire/cable after installation to allow visibility from any angle. In addition, they allow repositioning along the length of the cable which further improves ease of installation and flexibility in high density or space restrained applications. Installers will save time and material by being able to reposition the label after pulling the wire/cable and cutting it to final length for termination.

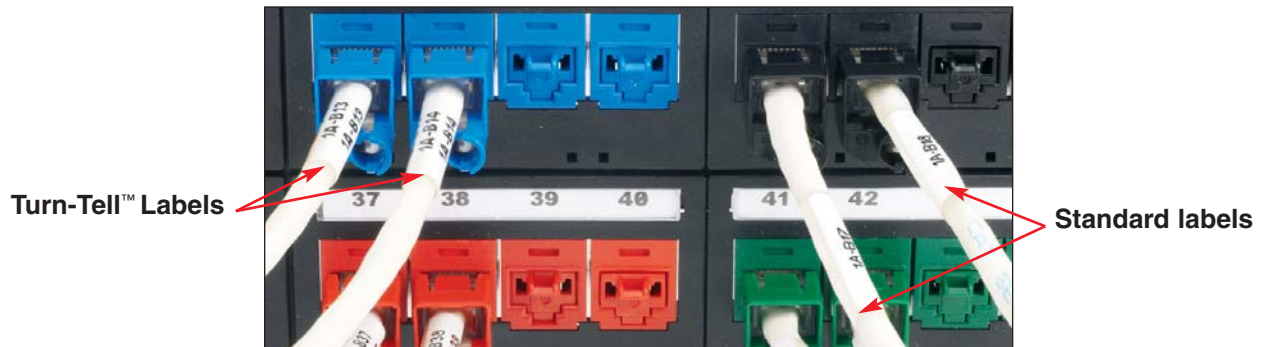
Offered in a wide range of sizes, the new Turn-Tell™ Labels are available in P1™ Cassettes for the PanTher™ LS8E and LS8EQ Hand-Held Thermal Transfer Printers. They are also offered in computer printable rolls, ready to print on demand using Panduit® Easy-Mark™ Labeling Software and desktop thermal transfer printers.



Key Features

Benefits

<i>Innovative design allows label to be moved after installation</i>	<p>Allows labels to rotate for visibility from any angle, and allows repositioning on the wire/cable to align legends for improved aesthetics</p> <p>Labels can be easily repositioned once installed on the wire/cable to save time and cost associated with relabeling; ideal for use in high density or space constrained cable applications</p>
<i>Wrap-around wire/cable label</i>	Permits labels to be installed on terminated wires/cables without disconnecting for increased productivity, performance, and cost savings
<i>Perforated adhesive backed anchor</i>	Facilitates easy installation; prevents unintended movement in vertical or high vibration applications for superior performance
<i>On-demand labeling solution</i>	Labels can be printed in the office using desktop thermal transfer printers or in the field using the PanTher™ LS8E or LS8EQ Hand-Held Thermal Transfer Printers; more cost effective than pre-printed solutions
<i>Thermal transfer print technology</i>	Provides crisp, clear, and durable legends for a reliable, high performance identification solution



“See the difference” with Turn-Tell™ Labels



Part Number	Part Description	Width		Length		Print-on Height		Cable Diameter Range		Std. Pkg. Qty.
		In.	mm	In.	mm	In.	mm	In.	mm	
Labels on Rolls for Use with Easy-Mark™ Labeling Software and Desktop Thermal Transfer Printers										
R100X075V1T	White, 18-14 AWG wire/cable.	1.00	25.4	0.75	19.1	0.25	6.4	0.12 – 0.16	3.0 – 4.0	2500
R100X125V1T	White, 12-10 AWG wire/cable.	1.00	25.4	1.25	31.8	0.38	9.7	0.16 – 0.22	4.1 – 5.6	2500
R100X150V1T*	White, Cat 5/5e/6 cable.	1.00	25.4	1.50	38.1	0.50	12.7	0.22 – 0.28	5.6 – 7.1	2500
R100X225V1T*	White, 8-4 AWG wire/cable.	1.00	25.4	2.25	57.2	0.75	19.1	0.28 – 0.39	7.1 – 9.9	2500
R100X400V1T	White, 2 AWG – 250 MCM wire/cable.	1.00	25.4	4.00	101.6	1.00	25.4	0.39 – 0.95	9.9 – 24.1	1000
R200X225V1T	White, 8-4 AWG wire/cable.	2.00	50.8	2.25	57.2	0.75	19.1	0.28 – 0.39	7.1 – 9.9	1000
R200X400V1T	White, 2 AWG – 250 MCM wire/cable.	2.00	50.8	4.00	101.6	1.00	25.4	0.39 – 0.95	9.9 – 24.1	1000

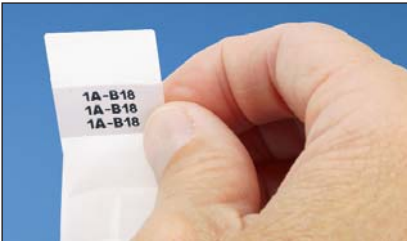
*For other colors replace suffix V1T (White) with V2T (Blue), V3T (Green), V7T (Red), or V8T (Yellow).

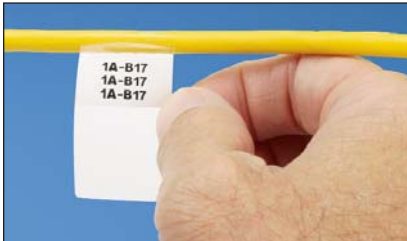



P1™ Label Cassettes for Use with the PanTher™ LS8E and LS8EQ Hand-Held Thermal Transfer Printers


R100X075V1C	White print-on, 18-14 AWG wire/cable, 150/cassette.	1.00	25.4	0.75	19.1	0.25	6.4	0.12 – 0.16	3.1 – 4.1	1
R100X125V1C	White print-on, 12-10 AWG wire/cable, 100/cassette.	1.00	25.4	1.25	31.8	0.38	9.7	0.16 – 0.22	4.1 – 5.6	1
R100X150V1C	White print-on, Cat 5/5e/6 cable, 100/cassette.	1.00	25.4	1.50	38.1	0.50	12.7	0.22 – 0.28	5.6 – 7.1	1
R100X225V1C	White print-on, 8-4 AWG wire/cable, 75/cassette.	1.00	25.4	2.25	57.2	0.75	19.1	0.28 – 0.39	7.1 – 9.9	1


How It Works

- 

Remove the label from the liner by lifting it at the non-adhesive middle section.
- 

Apply the top adhesive backed anchor section to the cable. For proper operation, the label should be applied squarely to the cable to avoid an uneven wrap.
- 

Wrap the label around the cable repeatedly until completely wrapped.
- 

Once the label is completely applied to the cable, pinch lightly and rotate it in the same direction as you wrapped it. This will break the label perforation and separate the label from the anchor.
- 

After the label is installed and detached from the anchor, it is free to rotate and slide on the cable. The anchor can be used as a stop to prevent unintended label movement in vertical or high vibration applications.

Adhesive backed anchor

WORLDWIDE SUBSIDIARIES AND SALES OFFICES

PANDUIT CANADA
Markham, Ontario
cs-cdn@panduit.com
Phone: 800.777.3300

PANDUIT EUROPE LTD.
London, UK
cs-emea@panduit.com
Phone: 44.20.8601.7200

PANDUIT SINGAPORE PTE. LTD.
Republic of Singapore
cs-ap@panduit.com
Phone: 65.6305.7575

PANDUIT JAPAN
Tokyo, Japan
cs-japan@panduit.com
Phone: 81.3.6863.6000

PANDUIT LATIN AMERICA
Jalisco, Mexico
cs-la@panduit.com
Phone: 52.33.3777.6000

PANDUIT AUSTRALIA PTY. LTD.
Victoria, Australia
cs-aus@panduit.com
Phone: 61.3.9794.9020

For a copy of Panduit product warranties, log on to www.panduit.com/warranty

For more information

Visit us at www.panduit.com

Contact Customer Service by email: cs@panduit.com
or by phone: 800-777-3300 and reference IDCB54

©2010 Panduit Corp.
ALL RIGHTS RESERVED.
Printed in the U.S.A.
Product Bulletin Number SA-IDCB54
Replaces WW-IDCB54
8/2010

PANDUIT®